



TAMARINDO ROUND COFFEE TABLE



DIMENSIONS (CM): DIA 100 X H 32

SPECIFICATIONS

TABLE TOP: Italian porcelain stoneware (1.2cm) | Available in 17 colours

FRAME & LEGS: Solid kiln-dried Iroko wood treated with a highly UV protective, weather-resistant and scratch-resistant finish available in 11 colours.

FEET: Protective rubber base

ACCESSORIES: All weather cover

* All sizes are approximate

To learn more about Coco Wolf and our collections please contact us:
enquiries@cocowolf.co.uk • +44 (0)207 262 8614 • www.cocowolf.co.uk

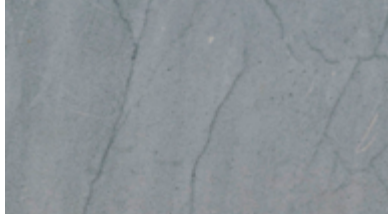
MARBLE FINISHES

ITALIAN MARBLE

High-quality marble sourced from Italy is both beautiful and elegant while being extremely hard-wearing and durable. The honed surface is coated with a spill-resistant sealant perfect for both outdoor and indoor use.



CARRARA



BARDIGLIO



SHARK NOSE



BEVELLED



STRAIGHT



MARBLE FINISHES

ITALIAN MARBLE

High-quality marble sourced from Italy is both beautiful and elegant while being extremely hard-wearing and durable. The honed surface is coated with a spill-resistant sealant perfect for both outdoor and indoor use.



CARRARA



BARDIGLIO



SHARK NOSE



BEVELLED



STRAIGHT



PORCELAIN FINISHES

ITALIAN PORCELAIN

The hard-wearing and versatile qualities of porcelain stoneware make it an ideal choice for our table collection. Impressive surface hardness withstands wear and scratching while being resistant to chemicals and colour change.



FIOR DI BOSCO



CALACATTA PRESTIGIO



CRYSTAL WHITE



JURA WHITE PORCELAIN



TRAVERTINO SAND



TRAVERTINO PEARL



CALATATTA BORGHINI



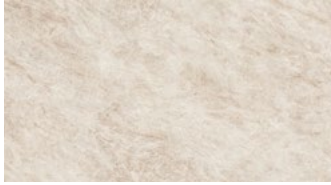
CREAM DIAMONDS



DESERT SOUL



PRECIOUS BROWN



TAJ MAHAL



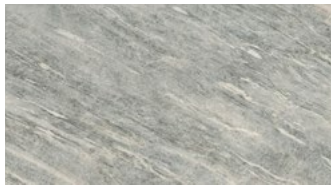
CALACATTA GOLD



COLORADO



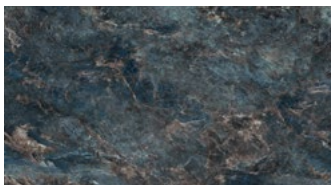
GOLD RIVER



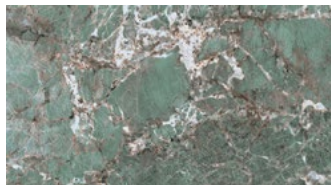
SKY STONE



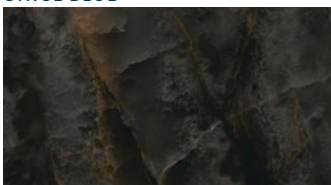
ONICE BLUE



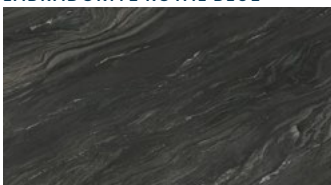
LABRADORITE ROYAL BLUE



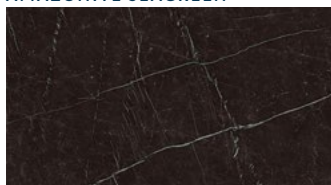
AMAZONITE SEAGREEN



ONICE BLACK



BLACK TEMPEST



NERO MARQUINA

STONE FINISHES

ITALIAN STONE COMPOSITE

A stone composite surface featuring small pebbles, perfectly paired with an industrial concrete texture. This striking combination establishes an ideal foundation for elegant contemporary spaces.

20MM - BULLNOSE



PIRINEI ECRU

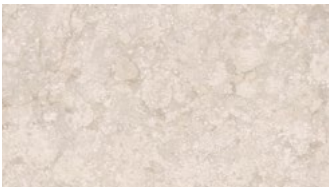


PIRINEI GREY

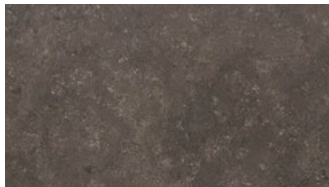


METEORA GRIS

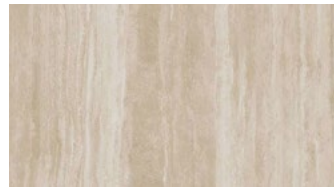
12MM



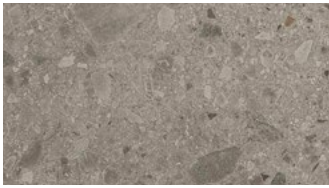
ATERIA CREMA



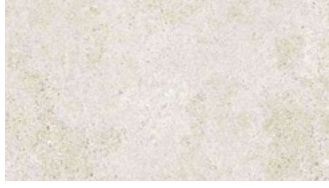
BRENTA MARRON



GEO CREMA



ISEO GRIS



MASAI BLANCO PLUS



STORM NEGRO

WOOD FINISHES

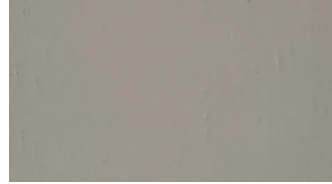
Coco Wolf furniture pieces are constructed using the very best modern materials to ensure they deliver maximum durability, whatever the weather. Our preferred choice of wood for frames and legs is Iroko, a hardwood renowned for its strength and extreme durability. It flexes with humidity and temperature, minimising the potential for cracking or splintering. It is naturally resistant to decay and is commonly used in demanding marine environments.



WHITE WASH



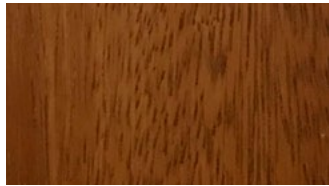
ACACIA



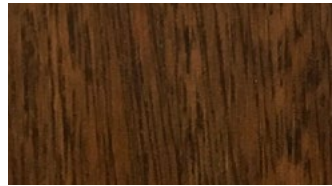
ALPINE



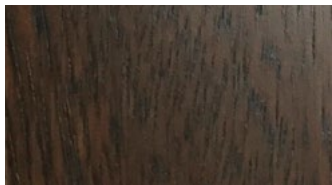
ALPINE WASH



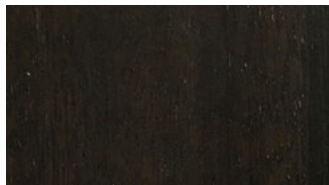
BLONDE



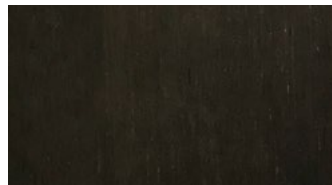
LIGHT TOBACCO



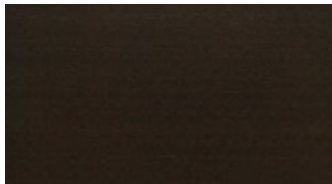
CINDER



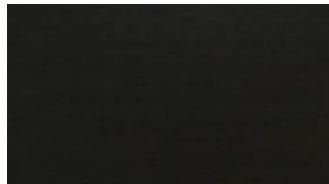
DARK TOBACCO



EBONISED



CACAO



MIDNIGHT

These colours are for reference only and are an approximation of the true colours. Samples will be sent out for sign off. Please note, for the 'Natural' finish, as Iroko wood is a natural material, the grain and shades of colour vary, this is not a defect but rather a natural beauty of working with solid wood.