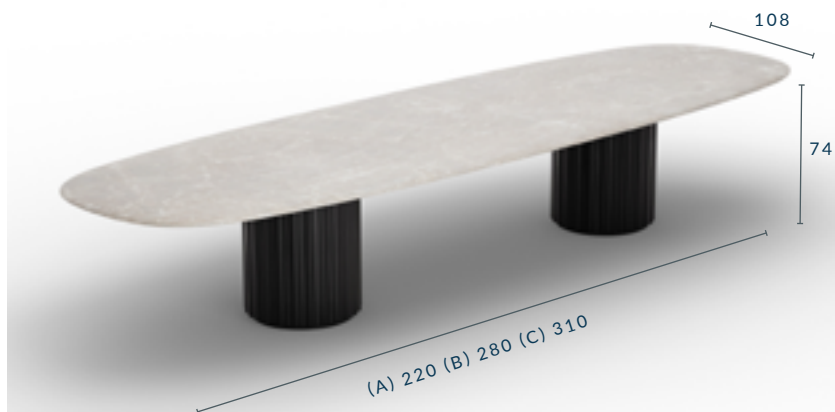




ZANTE OVAL DINING TABLE



DIMENSIONS (CM):

- (A) W 220 X D 108 X H 74 - FITS 6 TO 8 GUESTS
- (B) W 280 X D 108 X H 74 - FITS 10 TO 12 GUESTS
- (C) W 310 X D 108 X H 74 - FITS 12 TO 14 GUESTS

SPECIFICATIONS

TABLE TOP:

Italian porcelain stoneware (1.2cm) Available in 21 colours or
Stone Composite stoneware (2.0cm) Available in 2 colours

FRAME & LEGS: Solid kiln-dried Iroko wood treated with a highly UV protective, weather-resistant and scratch-resistant finish available in 11 colours.

FEET: Protective rubber base

ACCESSORIES: All weather cover

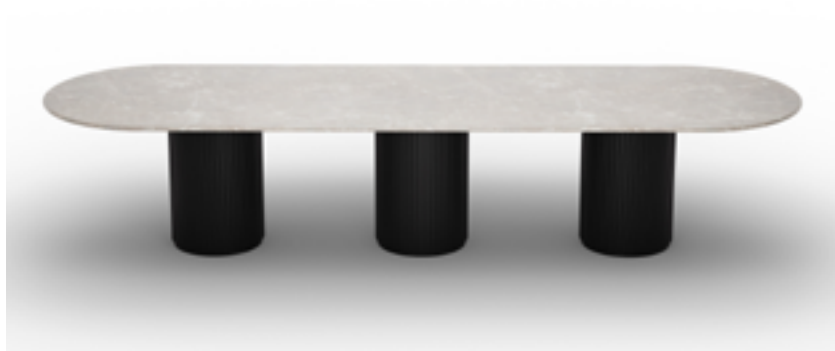
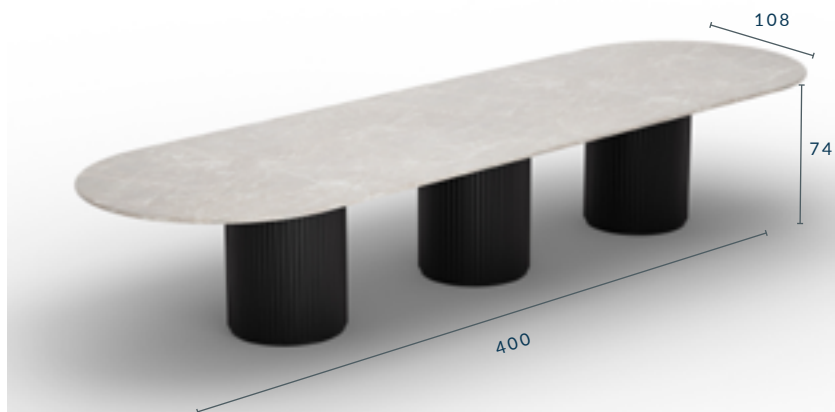
This design is perfectly complemented with the Zante dining chairs from the same collection

* All sizes are approximate

To learn more about Coco Wolf and our collections please contact us:
enquiries@cocowolf.co.uk • +44 (0)207 262 8614 • www.cocowolf.co.uk



ZANTE OVAL DINING TABLE



DIMENSIONS (CM):
W 400 X D 108 X H 74 - FITS 16 TO 18 GUESTS

SPECIFICATIONS

TABLE TOP:

Italian porcelain stoneware (1.2cm) Available in 21 colours or
Stone Composite stoneware (2.0cm) Available in 2 colours

FRAME & LEGS: Solid kiln-dried Iroko wood treated with a highly UV protective, weather-resistant and scratch-resistant finish available in 11 colours.

FEET: Protective rubber base

ACCESSORIES: All weather cover

This design is perfectly complemented with the Zante dining chairs from the same collection

* All sizes are approximate

To learn more about Coco Wolf and our collections please contact us:
enquiries@cocowolf.co.uk • +44 (0)207 262 8614 • www.cocowolf.co.uk

MARBLE FINISHES

ITALIAN MARBLE

High-quality marble sourced from Italy is both beautiful and elegant while being extremely hard-wearing and durable. The honed surface is coated with a spill-resistant sealant perfect for both outdoor and indoor use.



CARRARA



BARDIGLIO



SHARK NOSE



BEVELLED



STRAIGHT



PORCELAIN FINISHES

ITALIAN PORCELAIN

The hard-wearing and versatile qualities of porcelain stoneware make it an ideal choice for our table collection. Impressive surface hardness withstands wear and scratching while being resistant to chemicals and colour change.



FIOR DI BOSCO



CALACATTA PRESTIGIO



CRYSTAL WHITE



JURA WHITE PORCELAIN



TRAVERTINO SAND



TRAVERTINO PEARL



CALATATTA BORGHINI



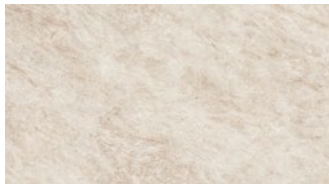
CREAM DIAMONDS



DESERT SOUL



PRECIOUS BROWN



TAJ MAHAL



CALACATTA GOLD



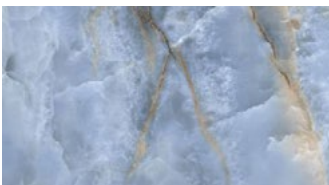
COLORADO



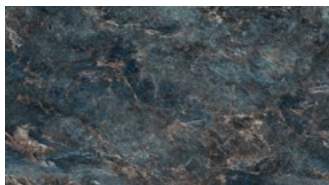
GOLD RIVER



SKY STONE



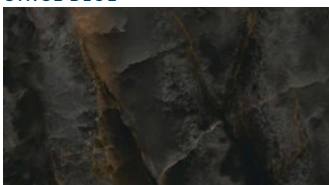
ONICE BLUE



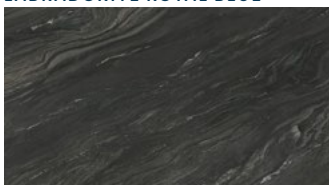
LABRADORITE ROYAL BLUE



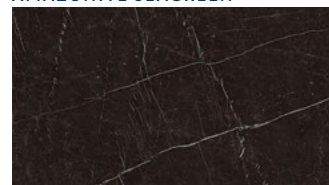
AMAZONITE SEAGREEN



ONICE BLACK



BLACK TEMPEST



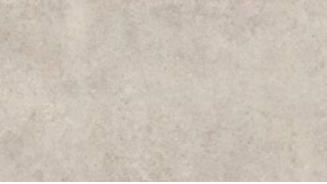
NERO MARQUINA

STONE FINISHES

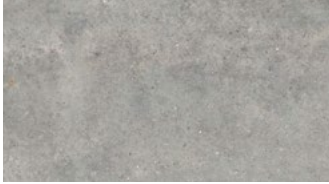
ITALIAN STONE COMPOSITE

A stone composite surface featuring small pebbles, perfectly paired with an industrial concrete texture. This striking combination establishes an ideal foundation for elegant contemporary spaces.

20MM - BULLNOSE



PIRINEI ECRU

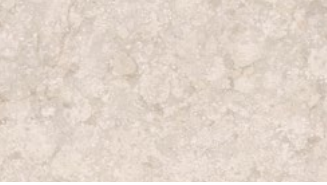


PIRINEI GREY



METEORA GRIS

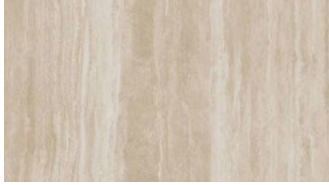
12MM



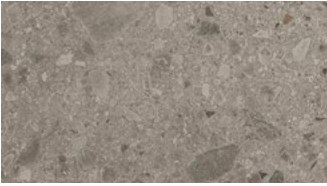
ATERIA CREMA



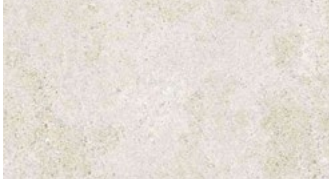
BRENTA MARRON



GEO CREMA



ISEO GRIS



MASAI BLANCO PLUS



STORM NEGRO

WOOD FINISHES

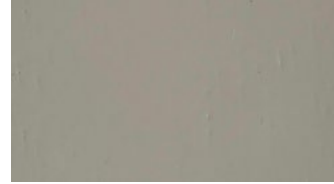
Coco Wolf furniture pieces are constructed using the very best modern materials to ensure they deliver maximum durability, whatever the weather. Our preferred choice of wood for frames and legs is Iroko, a hardwood renowned for its strength and extreme durability. It flexes with humidity and temperature, minimising the potential for cracking or splintering. It is naturally resistant to decay and is commonly used in demanding marine environments.



WHITE WASH



ACACIA



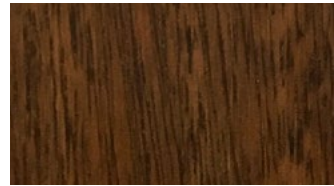
ALPINE



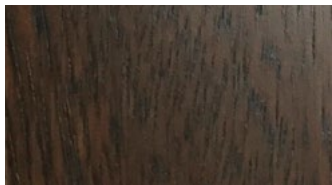
ALPINE WASH



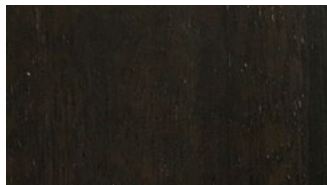
BLONDE



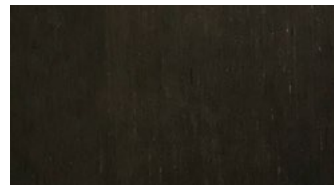
LIGHT TOBACCO



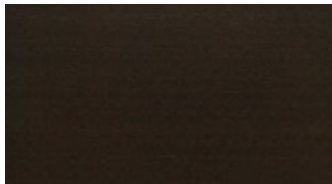
CINDER



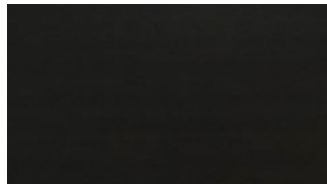
DARK TOBACCO



EBONISED



CACAO



MIDNIGHT

These colours are for reference only and are an approximation of the true colours. Samples will be sent out for sign off. Please note, for the 'Natural' finish, as Iroko wood is a natural material, the grain and shades of colour vary, this is not a defect but rather a natural beauty of working with solid wood.