



SERIES 1 - 230 X 230 CM



SPECIFICATIONS

A perfect match for any project around the world, outdoor umbrellas that blend in seamlessly with the environment. Caractère One Series surprises thanks to its sturdiness.

With a canopy incline of 10°, the umbrella looks enormously flat, drawing attention to its sleek lines with an elegant touch.



* All sizes are approximate

To learn more about Coco Wolf and our collections please contact us:
enquiries@cocowolf.co.uk • +44 (0)207 262 8614 • www.cocowolf.co.uk



SERIES 1 - 230 X 230 CM

SPECIFICATIONS

CENTRE POLE: Powder coated aluminium.

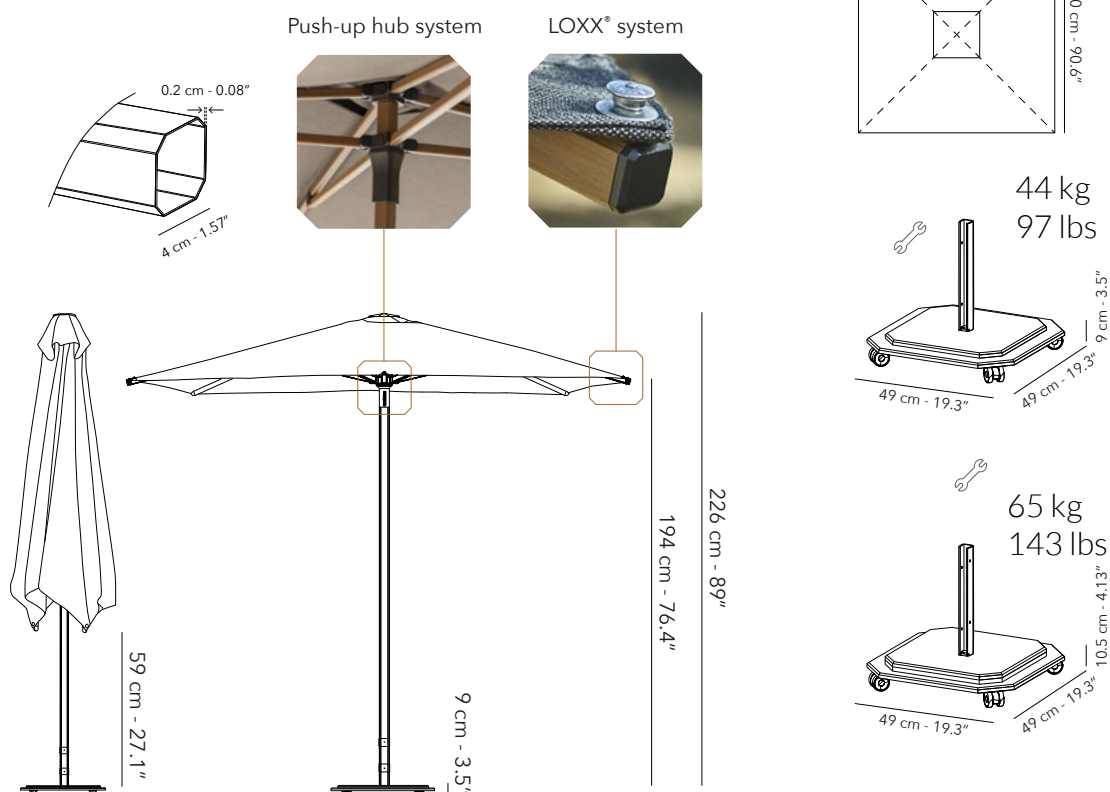
CANOPY: 100% solution dyed acrylic.
Tilt and rotation not applicable.

BASE: 44kg or 65kg, hot galvanized steel plates, powder coated. Four mounted wheels that rotate 360°, each with a brake.

MAX WIND: Base 44 kg: max. 43 km/h, 26.7 mph
Base 65 kg: max. 58 km/h, 36 mph



*All dimensions exclude the base.



* All sizes are approximate

To learn more about Coco Wolf and our collections please contact us:
enquiries@cocowolf.co.uk • +44 (0)207 262 8614 • www.cocowolf.co.uk



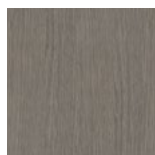
SERIES 1 - 230 X 230 CM

FRAME

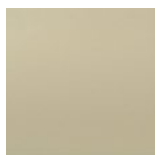
CENTER POLE FRAME, POWDER COATED ALUMINIUM



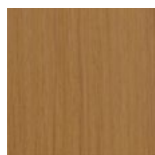
A01 WHITE



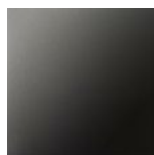
A10 CAPPUCCINO



A03 LINEN



A12 ALU TEAK



A31 CHARCOAL

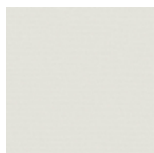


A32 BLACK

CANOPY - FAST DISPATCH FABRICS - FOR FULL LIBRARY SEE NEXT PAGE

100% SOLUTION DYED ACRYLIC

CATEGORY 3



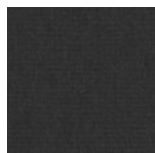
C003 PEARL



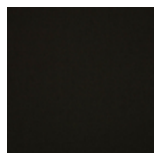
C011 COTTON



C022 NILE



C207 ONYX

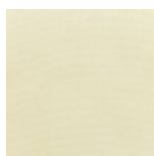


C210 PITCH

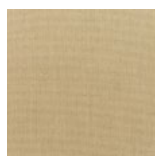


C305 UMBER

CATEGORY 2



C019 TOFU



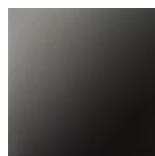
C023 HEATHER

BASE

HOT GALVANIZED STEEL PLATES, POWDER COATED - 44KG AND 65KG AVAILABLE



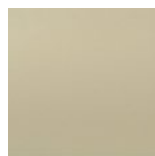
S01 WHITE



S31 CHARCOAL



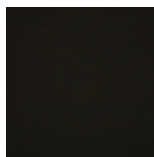
S32 BLACK



S03 LINEN

COVER

100% SOLUTION DYED ACRYLIC



BLACK

* All sizes are approximate

To learn more about Coco Wolf and our collections please contact us:
enquiries@cocowolf.co.uk • +44 (0)207 262 8614 • www.cocowolf.co.uk



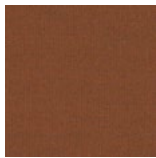
FABRICS

CATEGORY 2

C444 PEACH	C450 ARCTIC	C451 BELHARRA	C469 MISTRAL	C470 MERLOT	C471 ANTELOPE
C472 HIVE	C473 POPPY	C474 PEPPER	C475 VIVID	C476 CALATHEA	C477 PINEA
C478 MACAO	C479 LICHEN	C480 SEAFOAM	C481 BERYL	C482 ADRIATIC	C483 TRUST
C484 CYAN	C485 CURACAO	C486 CRISP	C019 TOFU	C020 POWDER	C023 HEATHER
C032 TULLE	C033 LIN	C034 ANTIQUE	C035 TRUSH	C036 FAWN	C112 FOG
C113 PLASTER	C116 COBBLE	C117 MILK	C118 STEAM	C214 ECLIPSE	C215 SHADOW
C223 FUEL	C224 LEAD	C225 ARDOISE	C226 TWEED	C227 BLACKBOARD	C307 CACAO

* All sizes are approximate

To learn more about Coco Wolf and our collections please contact us:
enquiries@cocowolf.co.uk • +44 (0)207 262 8614 • www.cocowolf.co.uk



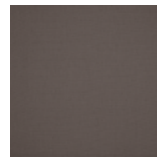
C310 AMBER



C311 VINO



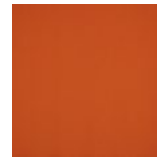
C312 CHESTNUT



C313 AUBURN



C314 CHOCOLATE



C402 TANGERINE



C403 PINK

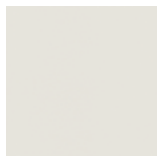


C409 BRICK



C443 MOSS

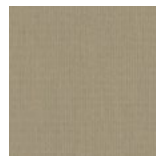
CATEGORY 3



C003 PEARL



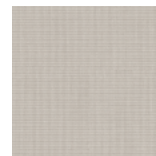
C011 COTTON



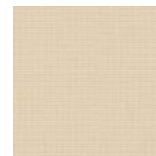
C022 NILE



C025 MUSHROOM



C026 HOWLITE



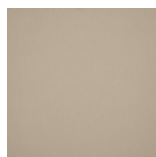
C027 MOONSTONE



C028 FLAX



C029 WHEAT



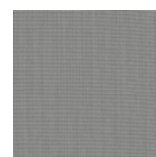
C030 PAPYRUS



C031 NUTMEG



C100 ICE



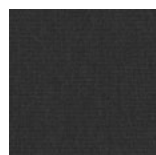
C107 MOONCREST



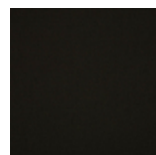
C114 CONCRETE



C115 CADET



C207 ONYX



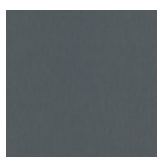
C210 PITCH



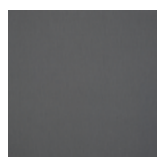
C216 ROCK



C217 IRON



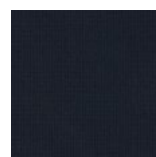
C218 PEWTER



C219 TITANIUM



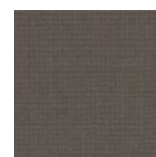
C220 BASALT



C221 FAROE



C222 SLATE



C305 UMBER



C308 GRAVEL



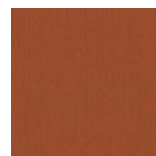
C309 EBÈNE



C452 SUNSET



C453 ROTALA



C454 GOBI



C455 BURGUNDY

* All sizes are approximate

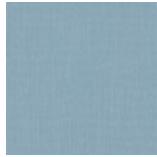
To learn more about Coco Wolf and our collections please contact us:
enquiries@cocowolf.co.uk • +44 (0)207 262 8614 • www.cocowolf.co.uk



C456 CRIMSON



C457 SUNRISE



C458 FJORD



C459 LAPIS



C460 CELESTIAL



C461 MARINE



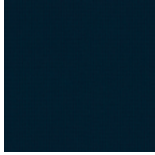
C462 TEAL



C463 NAVY



C464 GLACIER



C465 LOYAL



C466 EMERALD



C468 BERRY

* All sizes are approximate

To learn more about Coco Wolf and our collections please contact us:
enquiries@cocowolf.co.uk • +44 (0)207 262 8614 • www.cocowolf.co.uk