

PALOMA DINING TABLE (280CM)

The Paloma Dining Table balances sculptural form with everyday functionality, bringing a refined sense of permanence to outdoor dining spaces. Crafted from solid Iroko wood, its gently rounded silhouette and considered proportions echo the collection's inspiration, drawing from the organic shapes and enduring presence of desert stone formations.

Available in 11 Iroko wood finishes, 21 porcelain options, and 3 natural stone surfaces, it can be tailored to suit a wide range of outdoor settings while showcasing exceptional craftsmanship and durability.

TABLE TOP:
Italian porcelain stoneware (1.2cm) Available in 21 colours or
Stone Composite stoneware (2.0cm) Available in 2 colours

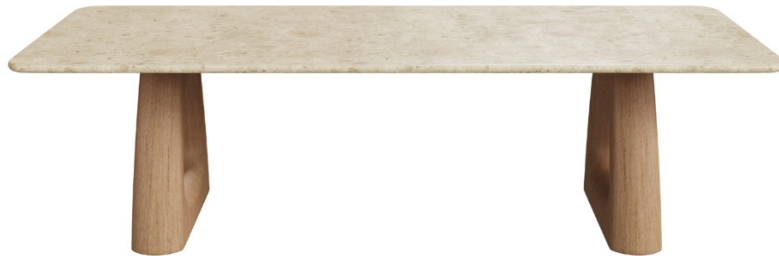
FRAME & LEGS :
Solid kiln-dried Iroko wood treated with a highly UV protective, weather-resistant and scratch-resistant finish available in 11 colours.

FEET: Protective rubber base

ACCESSORIES : All weather cover

WARRANTY: 5 Year Warranty for both Commercial and Residential projects





PALOMA DINING TABLE (310CM)

The Paloma Dining Table balances sculptural form with everyday functionality, bringing a refined sense of permanence to outdoor dining spaces. Crafted from solid Iroko wood, its gently rounded silhouette and considered proportions echo the collection's inspiration, drawing from the organic shapes and enduring presence of desert stone formations.

Available in 11 Iroko wood finishes, 21 porcelain options, and 3 natural stone surfaces, it can be tailored to suit a wide range of outdoor settings while showcasing exceptional craftsmanship and durability.

TABLE TOP:
Italian porcelain stoneware (1.2cm) Available in 21 colours or
Stone Composite stoneware (2.0cm) Available in 2 colours

FRAME & LEGS :
Solid kiln-dried Iroko wood treated with a highly UV protective, weather-resistant and scratch-resistant finish available in 11 colours.

FEET: Protective rubber base

ACCESSORIES : All weather cover

WARRANTY: 5 Year Warranty for both Commercial and Residential projects



MARBLE FINISHES

ITALIAN MARBLE

High-quality marble sourced from Italy is both beautiful and elegant while being extremely hard-wearing and durable. The honed surface is coated with a spill-resistant sealant perfect for both outdoor and indoor use.



CARRARA



BARDIGLIO



SHARK NOSE



BEVELLED



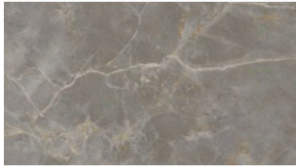
STRAIGHT



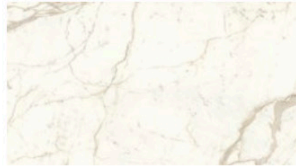
PORCELAIN FINISHES

ITALIAN PORCELAIN

The hard-wearing and versatile qualities of porcelain stoneware make it an ideal choice for our table collection. Impressive surface hardness withstands wear and scratching while being resistant to chemicals and colour change.



FIOR DI BOSCO



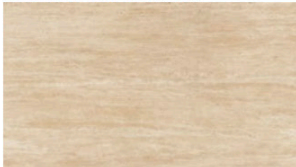
CALACATTA PRESTIGIO



CRYSTAL WHITE



JURA WHITE PORCELAIN



TRAVERTINO SAND



TRAVERTINO PEARL



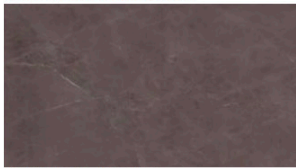
CALATATTA BORGHINI



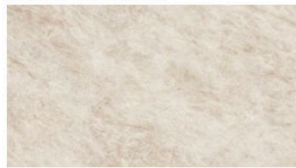
CREAM DIAMONDS



DESERT SOUL



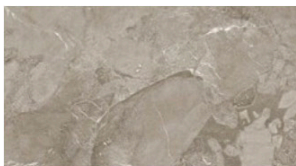
PRECIOUS BROWN



TAJ MAHAL



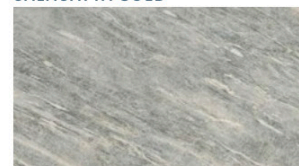
CALACATTA GOLD



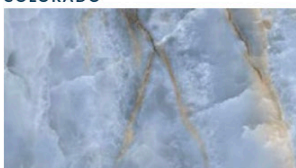
COLORADO



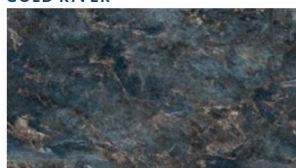
GOLD RIVER



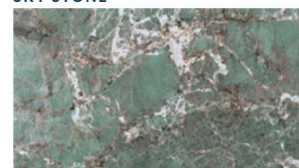
SKY STONE



ONICE BLUE



LABRADORITE ROYAL BLUE



AMAZONITE SEAGREEN



ONICE BLACK



BLACK TEMPEST



NERO MARQUINA



STONE FINISHES

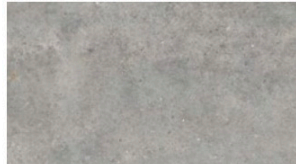
ITALIAN STONE COMPOSITE

A stone composite surface featuring small pebbles, perfectly paired with an industrial concrete texture. This striking combination establishes an ideal foundation for elegant contemporary spaces.

20MM - BULLNOSE



PIRINEI ECRU

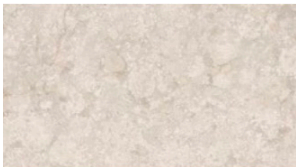


PIRINEI GREY

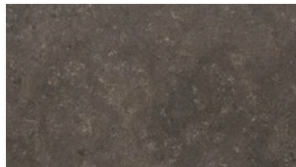


METEORA GRIS

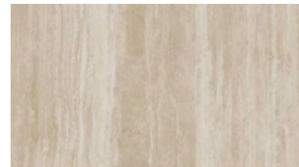
12MM



ATERIA CREMA



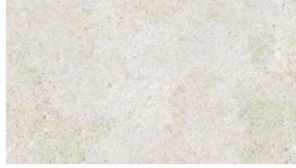
BRENTA MARRON



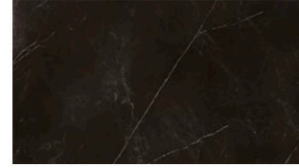
GEO CREMA



ISEO GRIS



MASAI BLANCO PLUS



STORM NEGRO



STONE FINISHES

ITALIAN STONE COMPOSITE

A stone composite surface featuring small pebbles, perfectly paired with an industrial concrete texture. This striking combination establishes an ideal foundation for elegant contemporary spaces.

20MM - BULLNOSE



PIRINEI ECRU

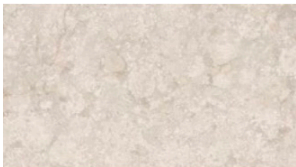


PIRINEI GREY

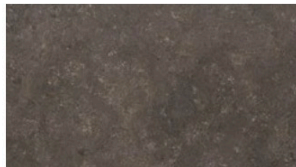


METEORA GRIS

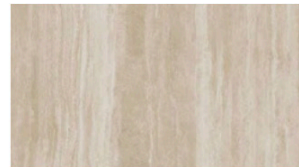
12MM



ATERIA CREMA



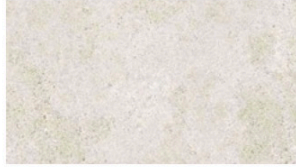
BRENTA MARRON



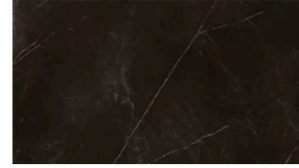
GEO CREMA



ISEO GRIS



MASAI BLANCO PLUS



STORM NEGRO



WOOD FINISHES

Coco Wolf furniture pieces are constructed using the very best modern materials to ensure they deliver maximum durability, whatever the weather. Our preferred choice of wood for frames and legs is Iroko, a hardwood renowned for its strength and extreme durability. It flexes with humidity and temperature, minimising the potential for cracking or splintering. It is naturally resistant to decay and is commonly used in demanding marine environments.



WHITE WASH



ACACIA



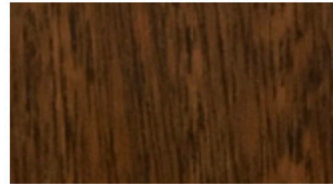
ALPINE



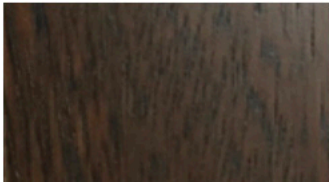
ALPINE WASH



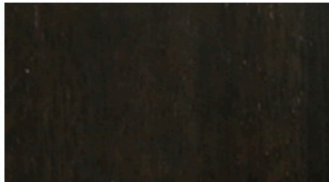
BLONDE



LIGHT TOBACCO



CINDER



DARK TOBACCO



EBONISED



CACAO



MIDNIGHT

These colours are for reference only and are an approximation of the true colours. Samples will be sent out for sign off. Please note, for the 'Natural' finish, as Iroko wood is a natural material, the grain and shades of colour vary, this is not a defect but rather a natural beauty of working with solid wood.

